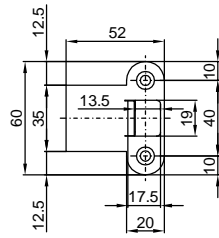
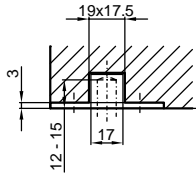
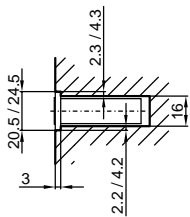
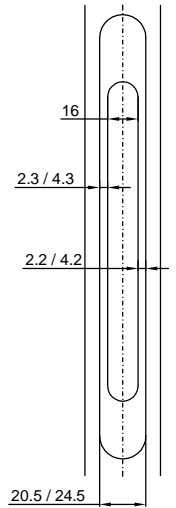
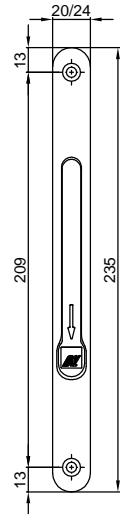
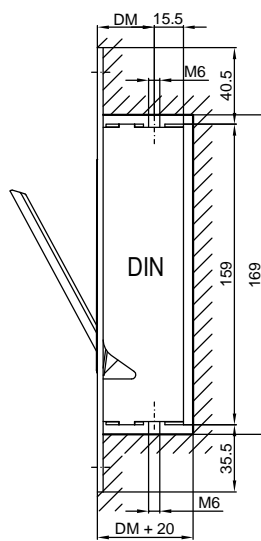
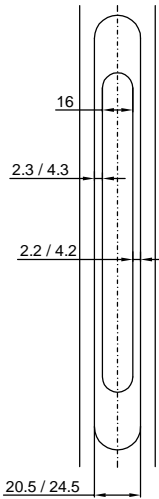
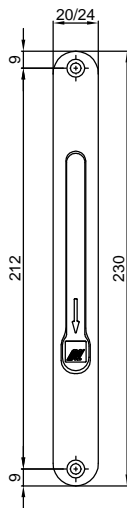
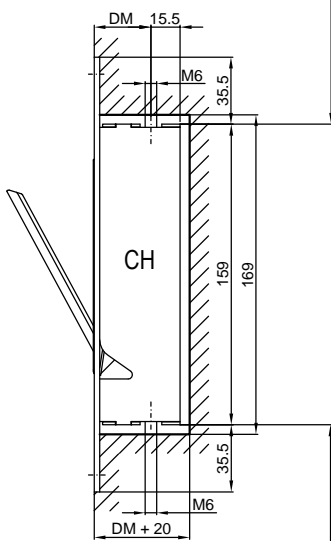
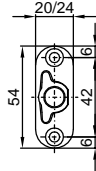
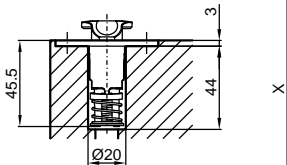


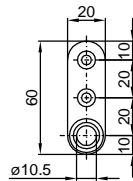
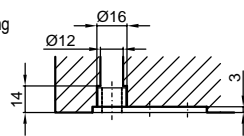
Lappenschliessblech



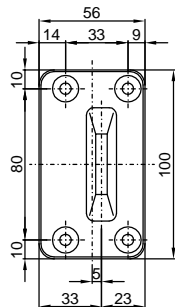
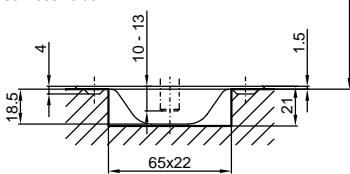
Schalt Schloss



Stangenführung



Bodenschliessmulde



Rohr oben ablängen:

- 1/ Mass X ermitteln (oberkant Kasten bis Schliessblech)
- 2/ Rohrlänge berechnen: $L = X + 15\text{mm}$
- 3/ Rohr auf das berechnete Mass zuschneiden

Stange unten ablängen:

- 1/ Mass Y ermitteln (unterkant Kasten bis Schliessblech)
- 2/ Stangenlänge berechnen: $L = Y + 13\text{mm}$
- 3/ Stange auf das berechnete Mass zuschneiden